

## Conventional Sounder Base C-9402



### Features and Benefits

1. High sound level
2. Low power consumption
3. Can be used as a detector base
4. Wall or ceiling mounting. Easy installation and connection.

### Description

In Fire and Security system the sounder is the most effective device for alerting personnel to evacuate the area. In the buildings such as hotels where thick doors and walls prevent external sound penetration, the use of a combined detector base with built-in sounder present a cost effective solution.

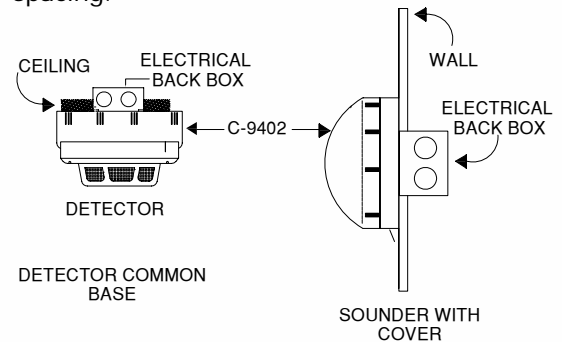
The GST C-9402 is a non-addressable sounder base on which can be mounted a conventional detector to provide the dual function of detection and alarm device or it can be used as a single sounder.

### Technical Specifications

- Operating voltage: 24Vdc (16Vdc to 28Vdc) polarized
- Operating Current: 15mA
- Operating temperature: -10°C to +50°C
- Relative humidity: 95%
- Sound Output: 85dB @ 1metre
- Application: Indoor use
- Material and colour: ABS, off-white
- Wiring: 1 pair polarized
- Dimensions: diameter 10cm; height : 3.5cm (w/o cover), 4.5cm (w/ cover)

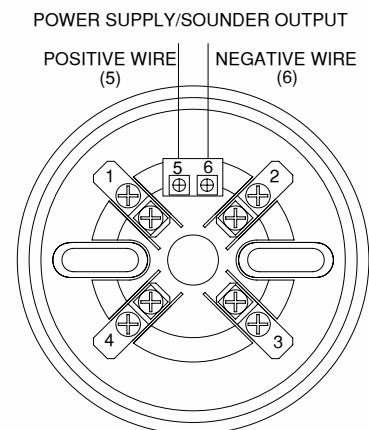
### Sounder Installation

The sounder base should be installed in compliance with all local codes or NFPA 72 National Fire Alarm Code, NFPA 70 National Electrical Code, BS5389 and EN54. It is install onto a standard one gang electrical box with a mounting hole that has 6.5cm spacing.



### Wiring and Connection

Connect the wires to the required terminal according to the wiring diagram. The 5,6 is for 24VDC power supply, note the polarity 5 is positive and 6 is negative. The cable must be fire rated type and the size depends on the wiring distance. Minimum size gauge 1.0mm<sup>2</sup>(18 AWG).



### Selection of compatible Control Panels

Compatible with all GST Conventional panel and GST Intelligent Fire Alarm Panels using sounder output and Intelligent Sounder Driver Module

### Ordering Information:

| Part No | Description               | Weight /Kg | Pack Qty per Box |
|---------|---------------------------|------------|------------------|
| C-9402  | Conventional Sounder Base | .120       | 100              |

Note: Specifications are subject to change without notice.

**GST England** Lion Court, Staunton Harold Hall, Melbourne Road, Ashby de la Zouch, Leicestershire, England LE65 1RT Tel: +44 1283 225 478 Fax: +44 1283 220 690

**GST Dubai** ZA04, Jebel Ali Free Zone, P.O.Box 17998, Dubai UAE Tel: +971 (0)4 8833 050 Fax: +971 (0)4 8833 053

**GST China** 80, Changjiang East Road, Economic & Technology Development Zone Qinhuangdao, Hebei, China Tel: +86(0)335 850 2383 Fax: +86 (0)335 850 7588



www.gst.uk.com  
info@gst.uk.com